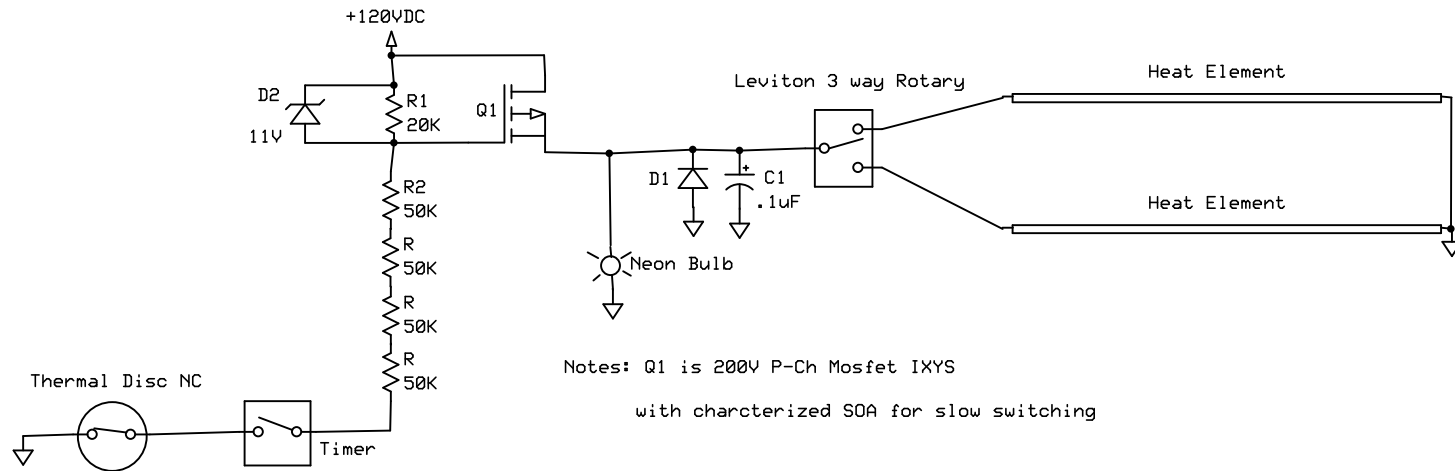


Replace stock bake/broil/toast switch with 3 way Leviton rotary lamp switch  
 The Leviton rotary lamp switch was originally designed for DC operation.



Notes: Q1 is 200V P-Ch Mosfet IXYS

with characterized SOA for slow switching

Diode D1 and Cap C1 to suppress inductive kickback

R2 x 4 could be replaced with single 1/2 watt 200K

As built and tested 12/12/2013

Toaster Mod to DC operation

Hand built prototype

R Bruce McCreary

Rev 1.0  
 12/13/2013

Page 1/1